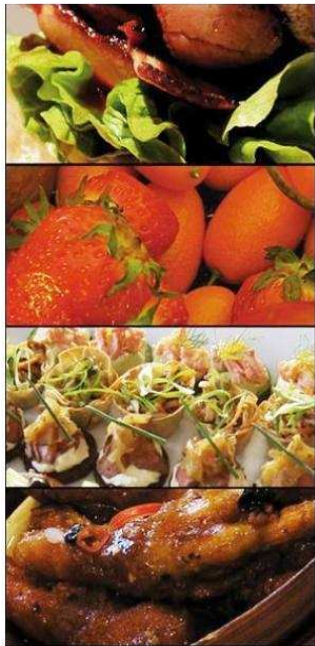


# *Sandy's*

Buffets by Design



# *Fork* *Buffet* *Menus*

*Tel / Fax : 01869 325877*  
*Email : [buffets@sandysltd.co.uk](mailto:buffets@sandysltd.co.uk)*  
*[www.sandysltd.co.uk](http://www.sandysltd.co.uk)*

## Starters

### *Melon Ball Trio (v)*

*Honey Dew, Orange Rash & Water Melon*

### *Prawn & Champagne Smoked Salmon Roulade*

*Garnished with Mixed Leaf Salad,  
Served with Fresh Baked Baguette Slices & Butter*

### *Ardennes with Plum & Brandy Pate*

*Garnished with Mixed Leaf Salad,  
Served with Fresh Baked Baguette Slices & Butter*

### *Stilton & Chestnut Pate (v)*

*Garnished with Mixed Leaf Salad,  
Served with Fresh Baked Baguette Slices & Butter*

*Choose any Two from the above at  
£4.00 Per Head*

## *Cold Fork Buffet*

*We offer a range of cold fork buffets, here is one of the more popular ones:*

*Sliced Roast Beef  
Sliced Gammon Ham  
(Vegetarian Option Available)*

*Served with;  
Tuna Pasta  
Homemade Potato Salad  
Homemade Coleslaw  
Beetroot & Onion Salad  
Mixed Leaf Salad  
1/4 cut Tomatoes  
Diced Cucumber  
Sliced Red Onions*

*Mixed Selection of Square Rolls, containing;  
Wholemeal, Poppy Seed & Sesame Seed Rolls  
& Butter*

*£12.00 Per Adult  
£6.00 Per Child*

## Cold / Hot Fork Buffet

*Sliced Roast Beef*  
*Sliced Gammon Ham*  
*1/4 Roast Chicken*  
*(Above served Cold)*

*(Vegetarian Option Available)*

*Hot Baby New Potatoes*

*Served with;*  
*Homemade Potato Salad*  
*Homemade Coleslaw*  
*Beetroot & Onion Salad*  
*Mixed Leaf Salad*  
*1/4 cut Tomatoes*  
*Diced Cucumber*  
*Sliced Red Onions*

*Mixed Selection of Square Rolls, containing;*  
*Wholemeal, Poppy Seed & Sesame Seed Rolls*  
*& Butter*

*£14.50 Per Adult*  
*£7.25 Per Child*

## Hot Fork Buffet

*Chilli Con Carne & Rice*  
*Served with Tortilla Chips & Dip*

*Or*

*Chicken Curry & Rice*  
*Served with Naan Bread & Chutney*

*Mushroom Stroganoff & Rice (v)*  
*Served with Naan Bread*  
*(vegetarian option with either of the above)*

*£10.50 Per Adult*  
*£5.25 Per Child*

## *Carvery Buffet*

*Sliced Roast Silverside of Beef*  
*Served with Yorkshire Pudding*

*Or*

*Sliced Roast Turkey Saddle*  
*Served with Sage & Onion Stuffing*

*(Vegetarian Option Available)*

*Served with;*  
*Roast Potatoes*  
*Cauliflower Cheese*  
*Seasonal Vegetables*  
*Gravy*  
*Traditional Sauces*

*£18.00 Per Adult*  
*£9.00 Per Child*

## Deserts

*We have a wide range of deserts, below is a selection of popular ones, please ask for a further selection.  
Seasonal varieties available.*

### **Gateau Selection**

*Lavish Lemon  
Black Forest & Kirsch  
Strawberry & Cointreau  
(Served with Fresh Cream)*

*£3.25 Per Head*

### **Cheesecake Selection**

*White Chocolate & Raspberry Brulee  
Chocolate Fudge  
Fruits of the Forest*

*£3.50 Per Head*

### **Individual Deserts**

*Citrus Lemon & Lime Bavarois  
Blackcurrant & Lime Bavarois  
Triple Chocolate Bavarois*

*£3.75 Per Head*

### **Fruit Deserts**

*Fresh Fruit Salad  
Tropical Fruit Cocktail in Fruit Juice*

*£3.00 Per Head*

*Please ask for Children's Selection*

# Terms & Conditions

*The following terms are the basis of all contracts between Sandy's Limited and the customer, for the services and goods supplied by Sandy's Limited.*

## Payment

- a) **Non returnable** deposit of 10% of total value required to secure the booking.*
- b) The remaining balance will be due in full, on or within 7 days prior to the event.*

*Cancellations will only be accepted **in writing**, either by post, fax or e-mail. Any monies paid in accordance with our booking conditions will be lost.*

*Any changes in the final number of attendees must be made aware to us 5 days prior to the event.*

*We reserve the right to vary the menu if necessary, due to seasonal or other circumstances beyond our control.*

*Substitute items will be of an equal value and style to the original.*

*Where applicable quotes include the provision for laying up food tables.*

*Our employees are not responsible for any forms of furniture movements, including setting out tables and chairs. If we experience any delays which result directly from the venue not being ready, we will charge accordingly at the rate of £10.00 per hour, or part thereof.*

*Any loss or damage to equipment by the customer, or guest, will be invoiced at the full replacement cost.*

*Any trays, plates, cutlery or any other form of equipment not accounted for at time of return will be invoiced for at the full replacement cost.*

*We do not accept any liability for delays resulting from adverse weather conditions, road traffic accidents or road closures, civil riots or strikes affecting the trade, fire, flood or other natural disaster, or for any other event beyond our reasonable control.*

*Sandy's Limited*

*The Granary, Grange Farm Mews, Station Road, Launton, Oxon.  
OX26 5DX*